

## DATASHEET

## Pressure

# Pressure&Temperature Transmitter For Industry Process Control

## Model PWP350-PT

### Applications

- Power station
- Coal & mine
- Chemical industry
- Petroleum
- Agriculture, hydrology
- Shipbuilding, metallurgy
- Industrial process control

### Features

- Pressure and temperature output
- Suits almost all industrial applications
- Equipped with 3 intelligent protection
- High stability, low drift
- Full sealed high stability impact design
- Variety choices for outputs, electrical connector and pressure port

**Pressure transmitter PWP350-PT**

### Description

PWP350-PT pressure transmitter/transducer applies high quality Germany imported piezoresistive pressure sensor chip and PT100 as sensing elements, with a fully welded stainless steel housing. Equipped with 3 intelligent protection: Over-voltage, over-current and polarity protection. After temperature compensation, digital circuit correction and signal conditioning, it outputs standard industrial application and networking signals to realize measurement for both pressure and temperature.

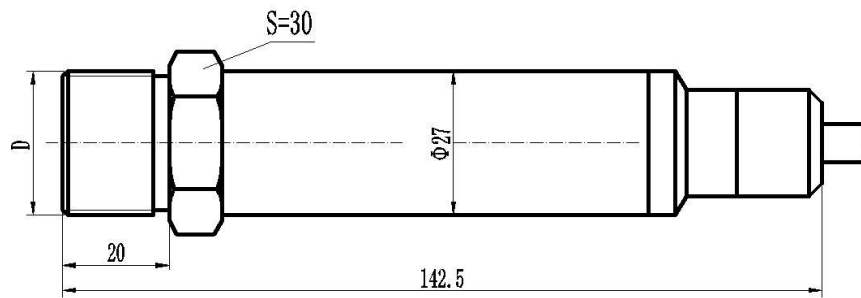
PWP350-PT has high measurement accuracy, fast response speed, stable output and reliable performance. A variety of outputs are available, and special requirements can be customized on demand.

To be proven as the excellent performance for many solutions worldwide. OEM&ODM is available. Come to us to know more.

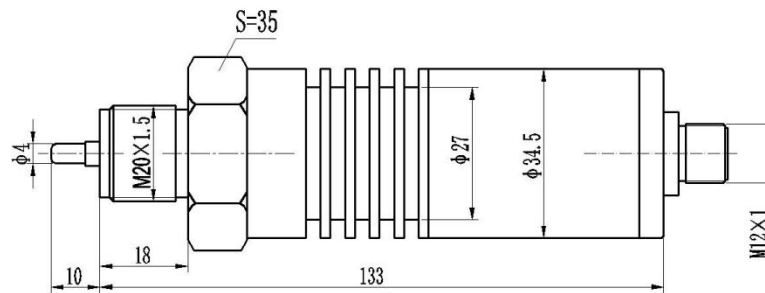
## Specifications

Model	PWP350-PT		
Pressure Type	Relative (gauge) /Absolute pressure/Sealed gauge pressure		
Pressure Range	-0.1MPa ... 0kPa~10kPa ...100MPa		
Temperature range	-20℃~~+100℃ (can be customized)		
Safe Overload	≤200%FS(<10MPa); ≤150%FS(≥10MPa)		
Burst Pressure	300%FS		
Electrical Connection & IP Rating	Directly outlet cable... IP67 DIN43650 Hirschmann Connector... IP65		
Accuracy	Pressure: ±0.5%FS(Typical), ±0.25%FS Temperature: ±1.0℃(Typical), ±0.5℃		
Signal Output & Power Supply	Dual 4-20mA 3 wires 12-30VDC	Dual 0-5V/0-10V 4 wires 8-24VDC/12-30VDC	RS485 Modbus 4 wires 5-30VDC
Response Time	≤3ms (10%~90%)		
Medium Compatible	Liquid compatible with ceramic and stainless steel SUS304, SS316L material		
Load Resistance(2 wires)	R≤(U-10)/0.02-RD (U: Power supply, RD: Internal resistance in the cable)		
Total current consumption	Current signal(2wires): Max about 23mA Voltage signal(3wires): <5mA RS485(4wires): <5mA (Available to customize low consumption <1.1mA)		
Accuracy&Performance	0.25% Accuracy Class	0.5% Accuracy Class	
Non-linear ( %FS )	≤0.2	≤0.4	
Hysteresis ( %FS )	≤0.05	≤0.1	
Repeatability (%FS)	≤0.05	≤0.1	
Long-term Stability (%FS/year)	≤0.2	≤0.5	
Zero Temp Drift ( %FS/℃ )	≤0.03	≤0.05	
Compensation Temp.	0℃~~+50℃(≤200kPa), -10℃~~+60℃(>200kPa)		
Working Temp.	-20℃~~+100℃		
Storage Temp.	-20℃~~+100℃		
Vibration Environment	10g (@10Hz~2000Hz)		
Impact Resistance	100g/11ms		
Service Life	>10 million load cycles (within measurement range)		
Explosion Proof	Exia II CT6 (optional)		
EMC Standard	EN IEC 61326-1:2021; EN IEC 61326-2:2021		

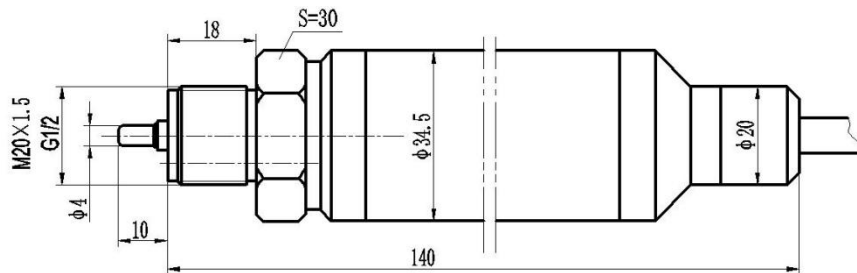
## Dimensions and Drawings



Range  $\leq 100$ MPa



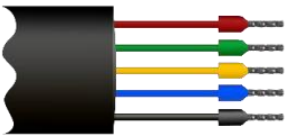
Range  $\leq 60$ MPa



Range  $\leq 25$ MPa

\*Unit is mm. Above is typical structures. Other structures and dimensions can be customized.

## Electrical Connection

Directly outlet cable				
	Wire Color	Dual Current (3wires)	Dual Voltages (4wires)	RS485 (4wires)
	Red	Vcc	Vcc	Vcc
	Green	Plout	GND	GND
	Yellow	TIout	PVout	RS485A
	Blue	/	TVout	RS485B
	Black	PE	PE	PE



## How to Order

**Example Part Number: 350PTC[10]BGT1S1C2A1M1001**

Model No.	PWP350-PT	350PT
Electronic Connection	C=Direct outlet cable H=DIN43650 Hirschmann terminal box 0=Customized	C
Pressure Range	-0.1MPa ... 0kPa~10kPa ... 100MPa Directly write in []	[10]
Pressure Units	B=bar      P=Psi      K=kPa      M=MPa	B
Pressure Type	G= Gauge/Relative A=Absolute S=Sealed gauge pressure	G
Signal Output	T1=Dual 4-20mA for P+T (typical) T2=Dual 0-5V for P+T T3=Dual 0-10V for P+T T4=RS485 Modbus RTU T0=Customized	T1
Power Supply	S1=12-30VDC S2=8-24VDC S3=5-30VDC S0=Customized	S1
Pressure Connection	C1=M20x1.5 male C2=G1/2" male C3=M30 x 1.5 male C0=Customized	C2
Accuracy	A1=0.5%F.S. A2=0.25%F.S. A3=0.1%F.S.	A1
Housing Material	M1=SUS304(Typical) M2=316L M0=Customized	M1
Cable Length	000=Non-cable 001= 1m cable 002= 2m cable ...	001

\*Means to order: Pressure transmitter PWP350-PT directly cable outlet, 0~10 bar Gauge, dual 4-20mA, 12-30VDC, G1/2" male, 0.5%FS accuracy, SUS304 material, cable length is 1 meter.

## You may also Need

Reference Picture	Description	Product
	To connect with pressure transmitter and to have a site indicator of the measured value, have high&low value alarms, record and control.	Display/indicator/controller
	Cast aluminum material with IP67 protection level for submersible pressure transmitter. Moisture-proof sealing design, insulation protection against electric shock. To be placed in dry environment or in a cabinet.	Terminal box 0010

*\*\*Tell us medium / which application / measuring range / working temperature / signal output / what you wanna to realize, our sales engineer will recommend suitable model for you.*